

Mini3S Standard Package

www.FiberFox.co.kr



- 1 MINI 3S Splicer
- 2 Cleaver Softcase
- 3 MINI 50G+ Cleaver
- 4 Power Cord
- 5 Data Cable
- 6 AC Adapter
- 7 Cooling Tray
- 8 Spare Electrode
- 9 Hand Carrying Case
- 10 Shoulder Strap
- 11 Battery Pack
- 12 USB Cable

Specifications

Splicing	Method	Active Alignment (DAA: Digitalized Active Alignment)	
	Loss	SM(0.03dB) / MM(0.02dB) / DS(0.05dB) / NZDS(0.05dB)	
	Time	RL : >>60dB SM Mode : 8 Sec.	
	Mode	139 modes (Pre-set: 11 / User set-up: 128)	
Applicable Fiber (Cable)	Attenuation	Available rage : 0.1 ~ 20dB	
	Fiber Type	SM (ITU-T G.652 & G.657) MM (ITU-T G.651) DS (ITU-T G.653) NZDS (ITU-T G.655)	
	Coating Diameter	100-3,000um	
	Cladding Diameter	80-150um	
Heating	Cleaved Length	<250Um Coating : 5-16mm >250Um Coating : 8-16mm	
	Time	Ave. 18 Sec.	
	Mode	37 modes (Pre-set: 5 / User set-up: 32)	
Hardware	Applicable Sleeve	20 ~ 60mm	
	Connectivity (link to PC)	USB(5Pin Mini-B)	
	Electrode Life span	>3,500 arcs	
	Data Storage	Splice record : 10,000 / Image : 2,000	
	Fiber detecting	Dual CCD camera with LED emitting system	
	Illumination	LED Spot light	
	Display	Color 4.3" LCD monitor, with Touch Screen (Tempered Glass)	
	Battery		Li-ion 11.1V 3000mAh
			200 cycles (Splicing & Heating) Storage Temperature : -20~40°C
	Power Supply	AC 100-240V input or DC 12.6V 1.8A	
	Fiber Display (Magnification)		X/Y (Single image): 260x
			X&Y (Dual image): 130x
	Weight	1.1kg (with battery : 1.3kg)	
Size	123 x 114 x 126mm (L x W x H)		
Reliability	Wind Protection	Wind speed: 15m/s (max)	
	Operating Environment	Altitude: 0-5,000m Temperature: -10~50°C Humidity: 0-95%RH	
	Storage Condition	Temperature: -20 to 60°C Humidity: 0-95%RH	
	Pull Test	1.96~2.25N(standard)	



Active Alignment Splicer

1.1
kg

200
cycles

8
sec

0.03
dB

Characteristic



Heating Time
18 sec



LED Injection



Mini 3S

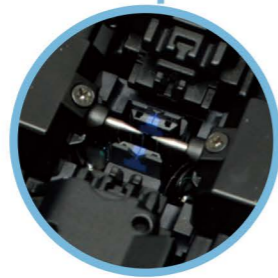
1.1kg

(with Battery 1.3kg)

123 x 114 x 126 mm



3000mAh Battery is Included
- 200 cycles (splicing & heating)



Splice Time : 8 sec
Electrode Lifespan : 3,500 arcs

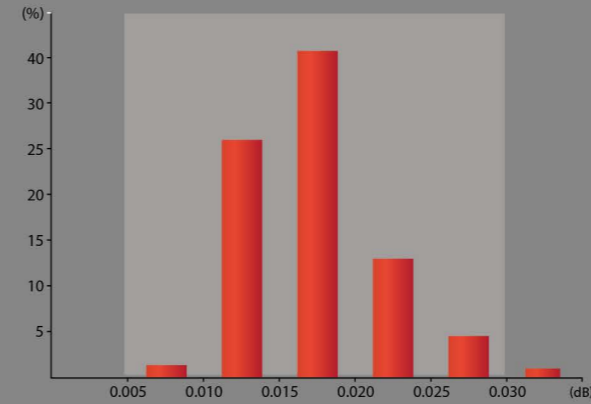


Full Touch Screen
- GUI Interface
- Tempered Glass

01

Performance

Guaranteed Stability and Splicing Performance



0.03dB > 90%

02

Splicing Time
8 sec

03

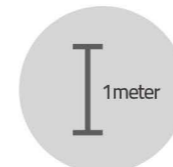
Durability



Waterproof



Dustproof



Anti-shock

04

Reliability

Perfect performance
under any environmental conditions



Temperature
-15~60



Relative humidity
0~95%



Elevation
0~5000meter



The max wind
speed 15m/s

Compliant with IEC Standard